

RAZZMATAZZ

RAZZMATAZZ / SALA 1 LIGHTING EQUIPMENT LIST v23

STAGE FIXTURES

12 x	Robe Robin Pointe	(mode1, 24ch)
08 x	Clay Paky Midi B	(extended RGBW, 37ch)
04 x	Elation Fuze SFX	(31ch)
04 x	Elation Strobe Protron 3K	(4ch mode)
10 x	PAR Led Elation SixPar200 / Front	(8ch mode)
06 x	ETC Source4 jr, 575W	
02 x	ACL Par64 (x 8)	
04 x	Martin Rush Blinder 1 WW	(8ch mode)

STAGE LIGHTING STRUCTURE

01 x	11m Back Truss (52x52cm)	//	02 x Hoist Stagemaker SL10 1,6T
01 x	9m Mid Truss (52x52cm)	//	02 x Hoist CM Lodestar 1T
01 x	9m Front Truss (52x52cm)	//	02 x Hoist CM Lodestar 500kg
01 x	10m Backdrop Prolyte Truss X30D	//	02 x Hoist Stagemaker SR1 250kg
01 x	9m Backdrop E20D Truss	//	02 x Hoist Stagemaker SR1 250kg
05 x	Motor Control		

CONTROL AND POWER

01 x	GrandMA3 Light
24 x	Dimmer channels 2,2KW (16 free available channels)
01 x	63A, 3ph Power Connection with red CEEFORM, located at UpStage Right / we can provide an adapter down to 2 x 32A CEEFORM.
01 x	400A PowerLock Panel (Guest must bring its own cable, 25m to USR)
02 x	Cat6 lines from Stage to FOH
04 x	Free DMX lines

OTHERS

01 x	MDG AtMe
01 x	Black backdrop 11m x 7m
01 x	Truss for Artist backdrop 10 x 7m (safety and fire certificates of your backdrop will be required)

STAFF

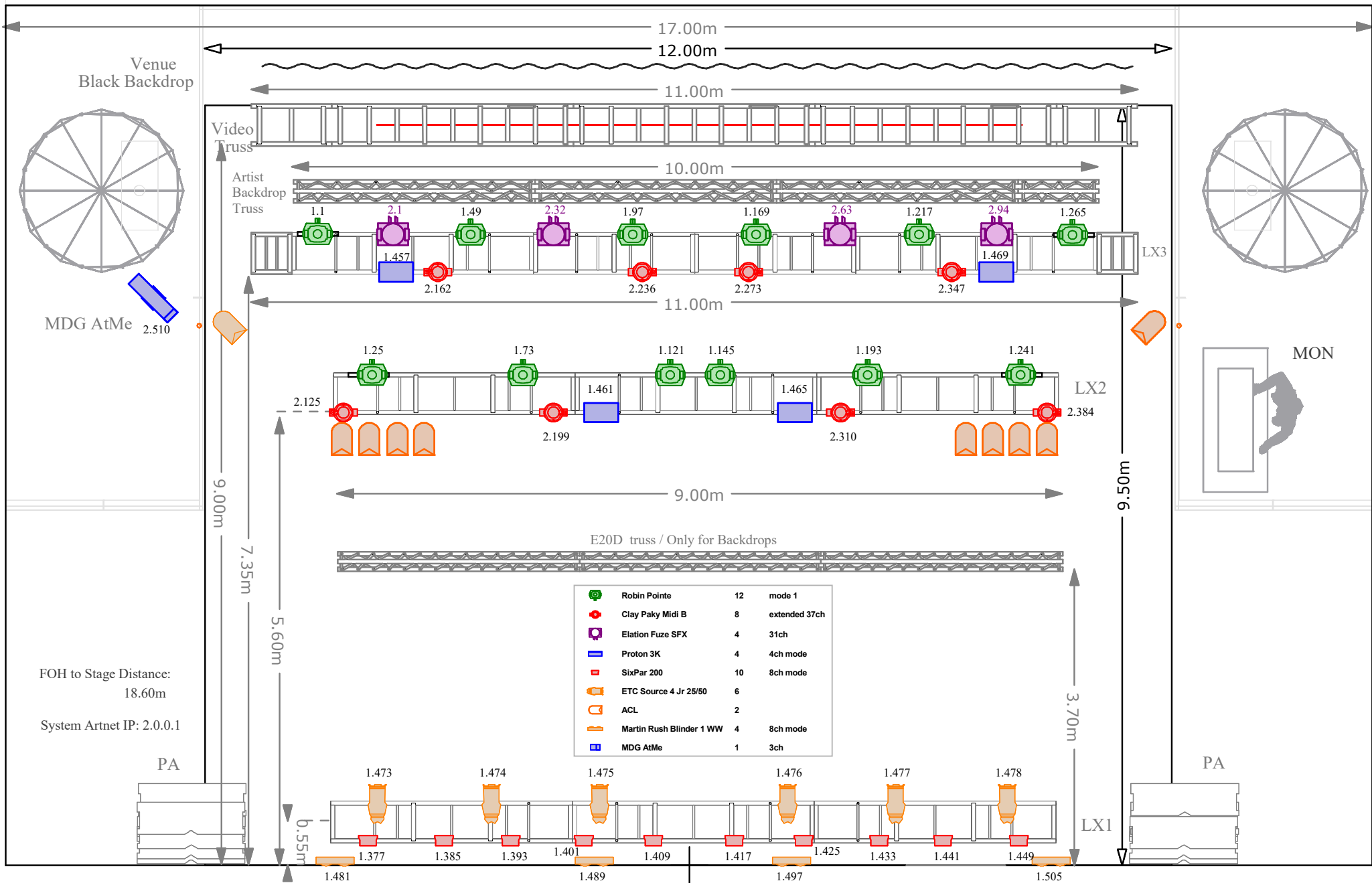
02 x	Lighting technician
------	---------------------

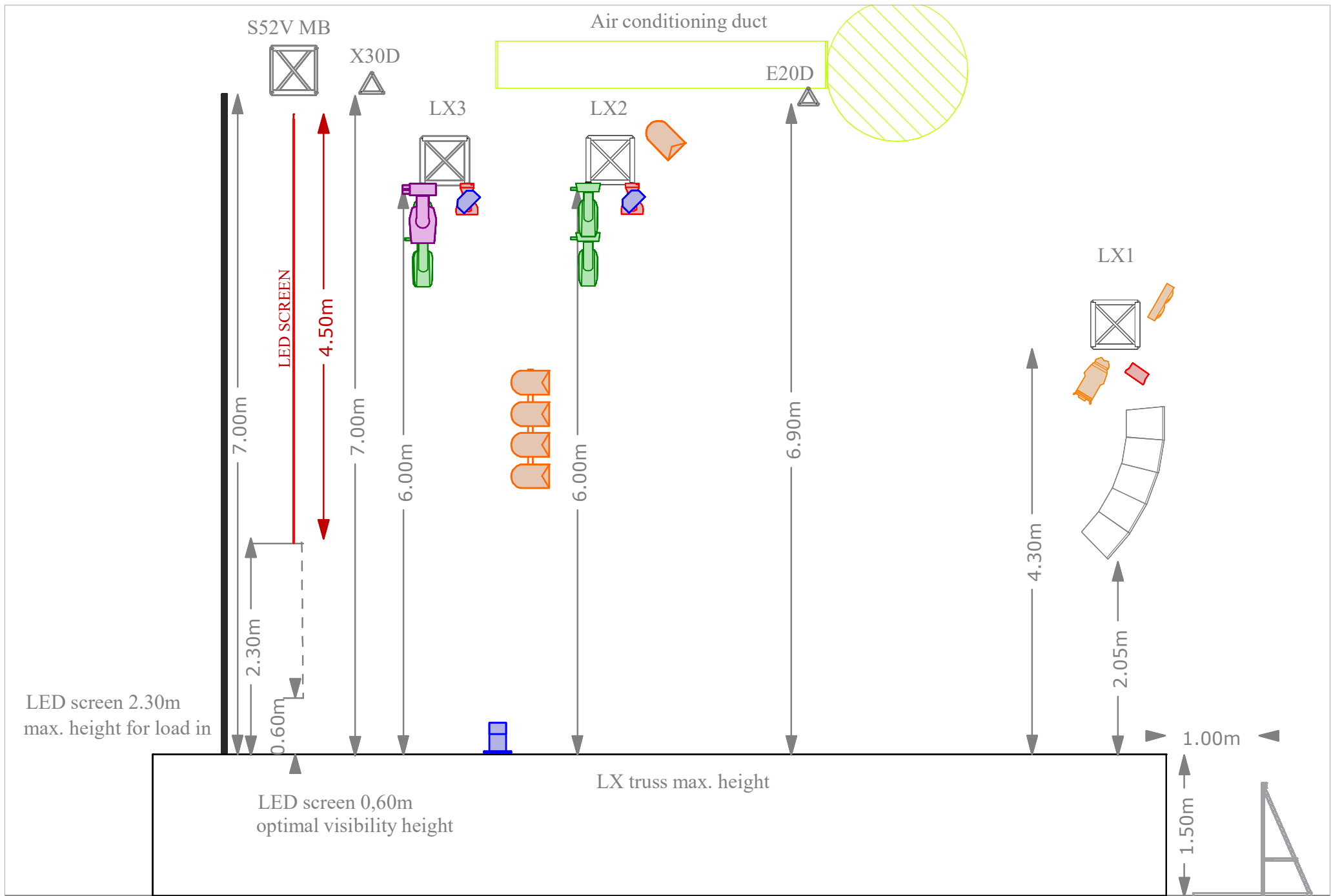
EFFECTS

Pyro: The following SPARKULAR machines are admitted: BT01/BT02 (with adjustable height). **Any other Pyro FX, Flames included, are PROHIBITED.**

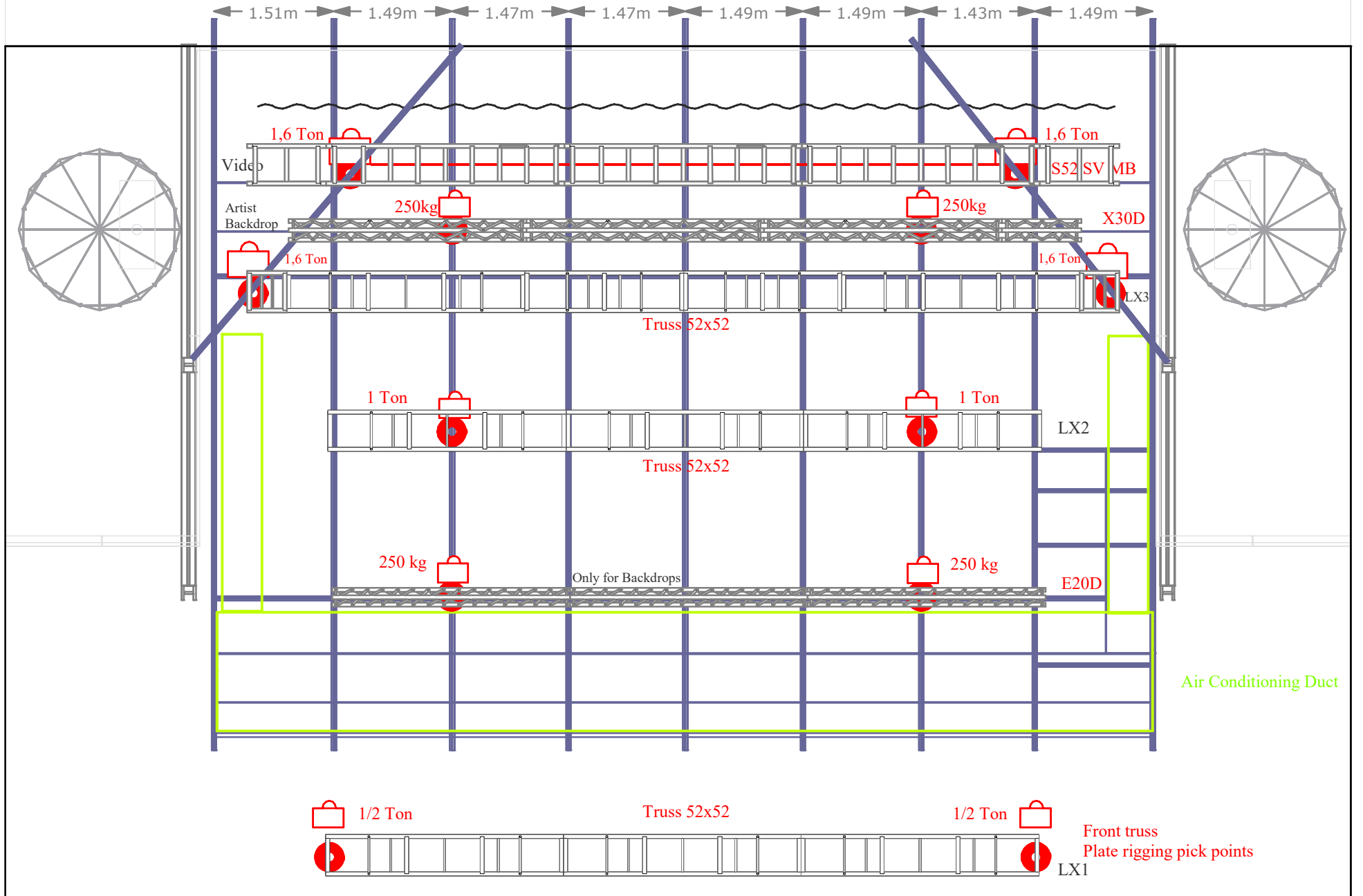
Confetti: Streamers and metallic PVC confetti are **PROHIBITED.**

RAZZMATAZZ





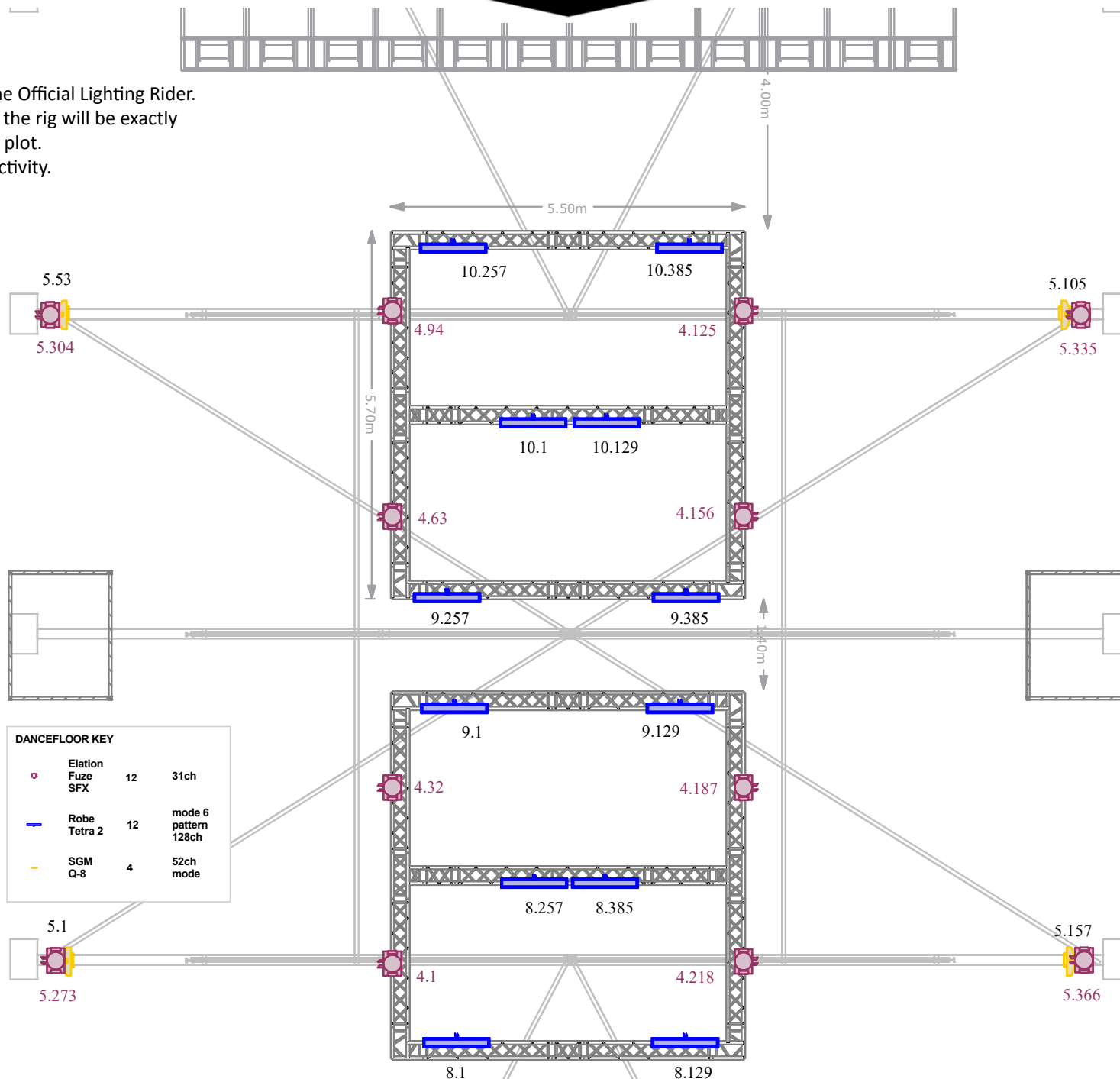
RAZZMATAZZ



RAZZMATAZZ

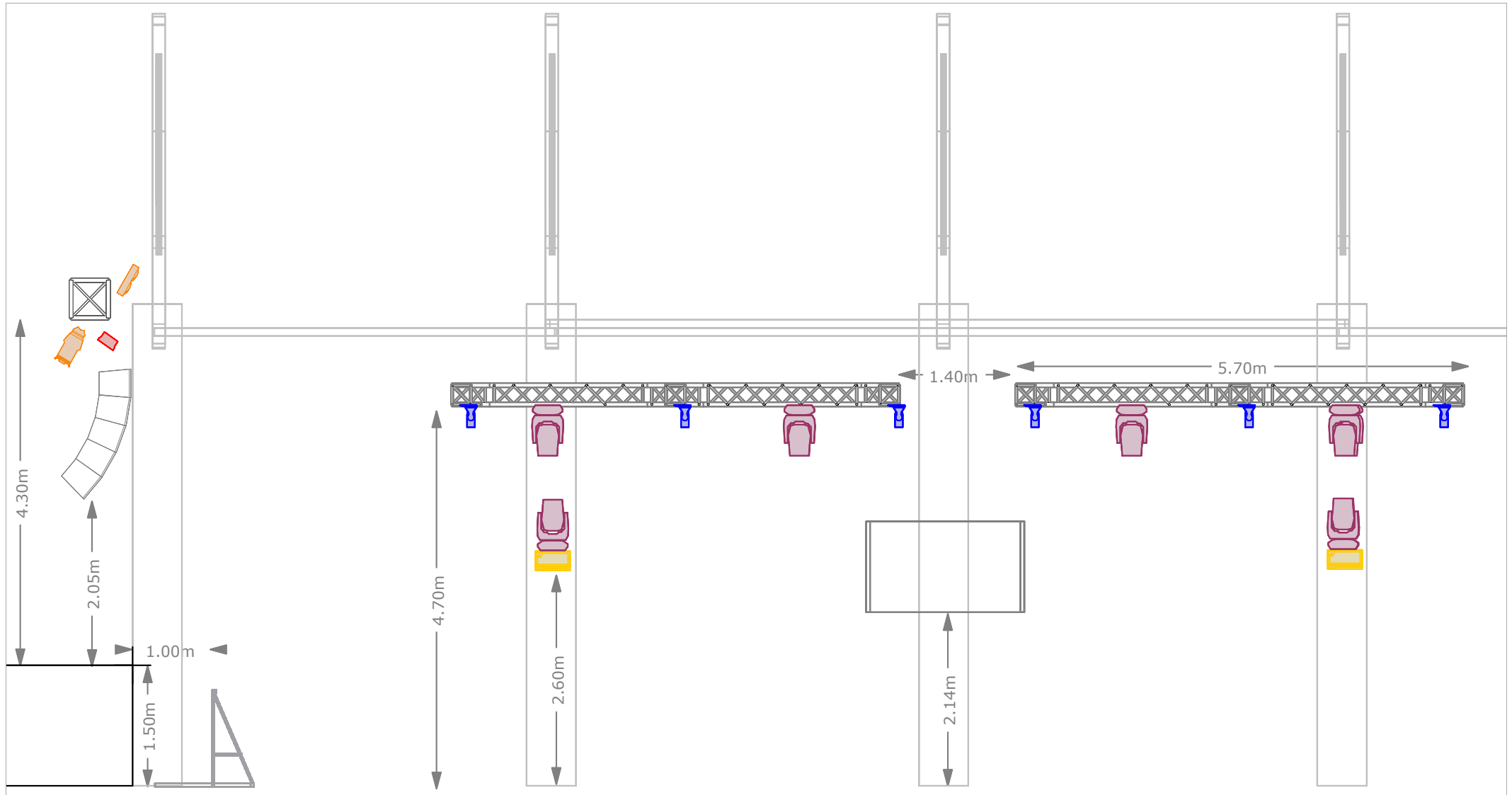
DANCEFLOOR

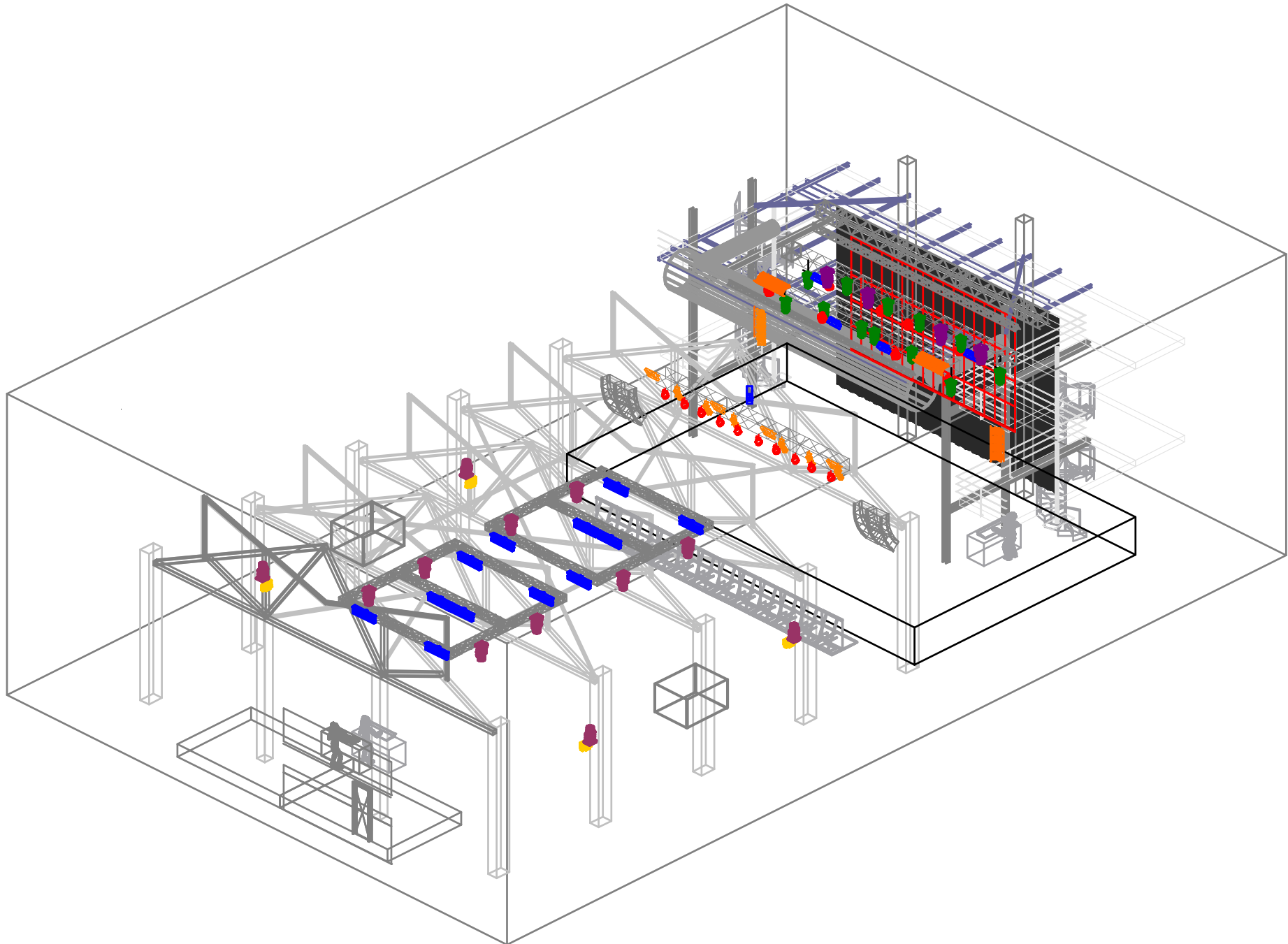
Fixtures not included in the Official Lighting Rider.
 We cannot guarantee that the rig will be exactly the same as shown in this plot.
 It depends on the Club's activity.



DANCEFLOOR

Fixtures not included in the Official Lighting Rider.
We cannot guarantee that the rig will be exactly the same as shown in this plot.
It depends on the Club's activity.





PATCH SALA1 / CONCERTS

LINE 1 (stage)

ROBE Pointe	x 12	mode 1	1,25, 49, 73, 97, 121, 145, 169, 193, 217, 241, 265	(*back truss)
Strobe Protron 3K, Elation	x 04	4ch mode	457, 461, 465, 469	
PAR Led Sixpar 200, Elation (front)	x 10	8ch mode	377,385, 393, 401, 409, 417, 425, 433, 441, 449	
Profile ETC 25/50 (front)	x 06		473,474, 475, 476, 477, 478	
ACL	x 02		479,480	
Martin Rush Blinder 1 WW	x 04	8ch mode	481,489, 497,505	

LINE 2 (stage)

Elation Fuze SFX	x 04	31ch	1,32, 63, 94	(back truss)
Clay Paky, Midi-B	x08	extended RGBW, 37ch	125,162, 199, 236, 273, 310, 347, 384	
MDG AtMe / Stage		3ch	510	ch1 + ch3 always ON / ch2 haze regulation

LINE 3 (stage)

FREE

PATCH SALA1 / DANCEFLOOR

LINE 4 (truss dancefloor)

Elation Fuze SFX / Dancefloor	x 08	31ch	1,32,63,94,125,156,187,218	
MDG Atmosphere APS / Dancefloor	x 01	2ch	510	ch1 always ON / ch2 haze on-off

LINE 5 (platforms)

SGM, Q8	x 04	52 ch	1,53, 105, 157	
Elation Fuze SFX / Platforms	x 04	31ch	273,304, 335, 366	

LINE 8 (ETHERNET) (truss dancefloor)

Robe Tetra 2	x 04	mode 6 - pattern, 128ch	1,129, 257, 385	
--------------	------	-------------------------	-----------------	--

LINE 9 (ETHERNET) (truss dancefloor)

Robe Tetra 2	x 04	mode 6 - pattern, 128ch	1,129, 257, 385	
--------------	------	-------------------------	-----------------	--

LINE 10 (ETHERNET) (truss dancefloor)

Robe Tetra 2	x 04	mode 6 - pattern, 128ch	1,129, 257, 385	
--------------	------	-------------------------	-----------------	--