

# RAZZMATAZZ

## RAZZMATAZZ / SALA 2

### LIGHTING EQUIPMENT LIST

V.25

#### STAGE FIXTURES

08 x	Clay Paky, Axcor 300	(23 ch)
08 x	Robe LedBeam 150	(mode1)
02 x	Elation, Strobe Protron 3K	(4ch mode)
06 x	Elation, SixPar200	(8ch mode) // front light
16 x	PAR64 // 8 zenithal+ 8 back	
02 x	Martin Rush Blinder	(8ch mode)

#### CONTROL AND POWER

01 x	GrandMA2 Ultralight
01 x	Extra Touch Screen
24 x	Dimmer channels 2,2KW
01 x	32A Power Connection
02 x	Free DMX lines

#### OTHERS

01 x	MDG AtMe	(3ch)
01 x	Black backdrop	
01 x	Pipe for band backdrop (9m length)	

#### STAFF

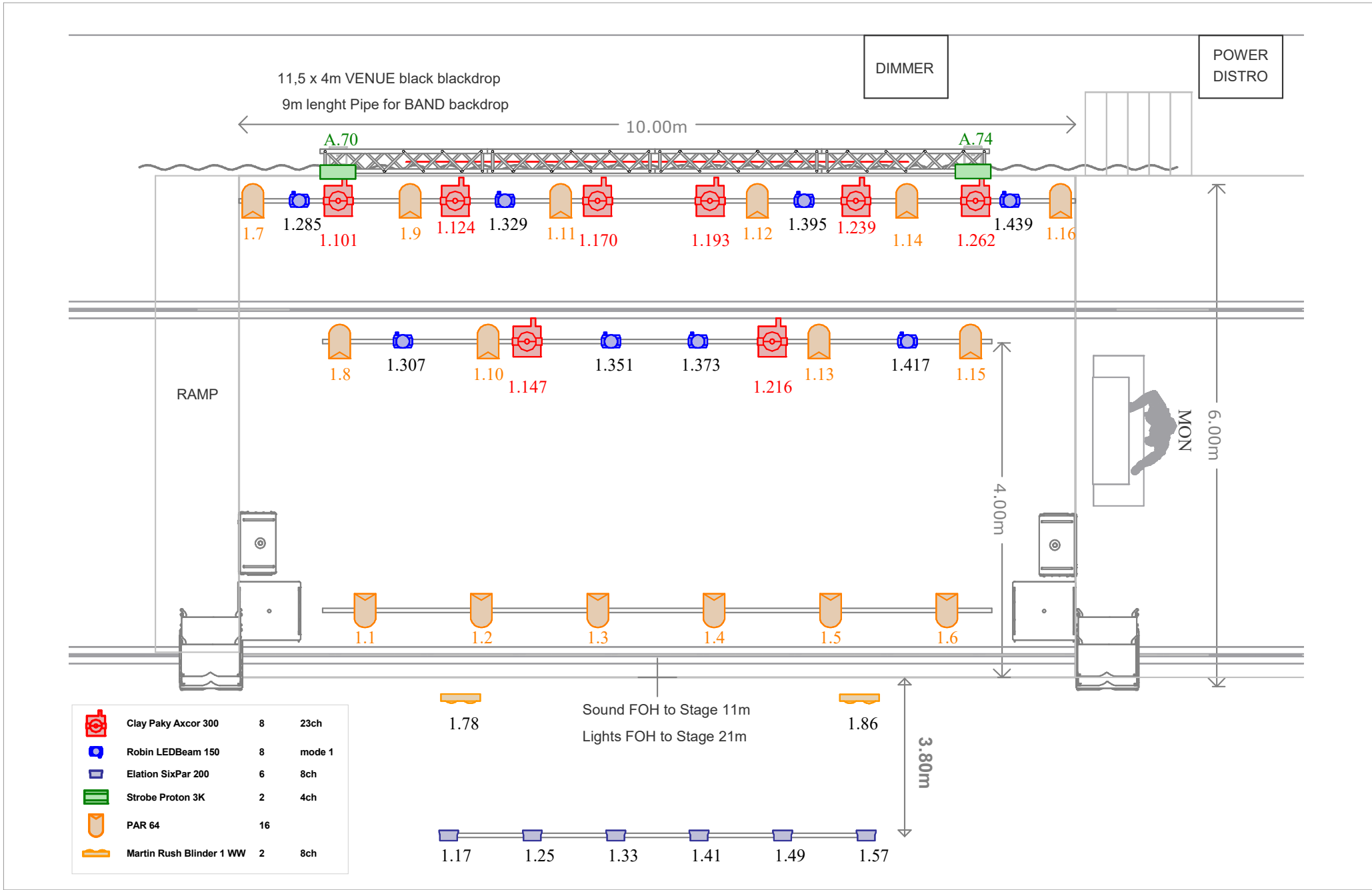
01 x	Lighting technician
------	---------------------

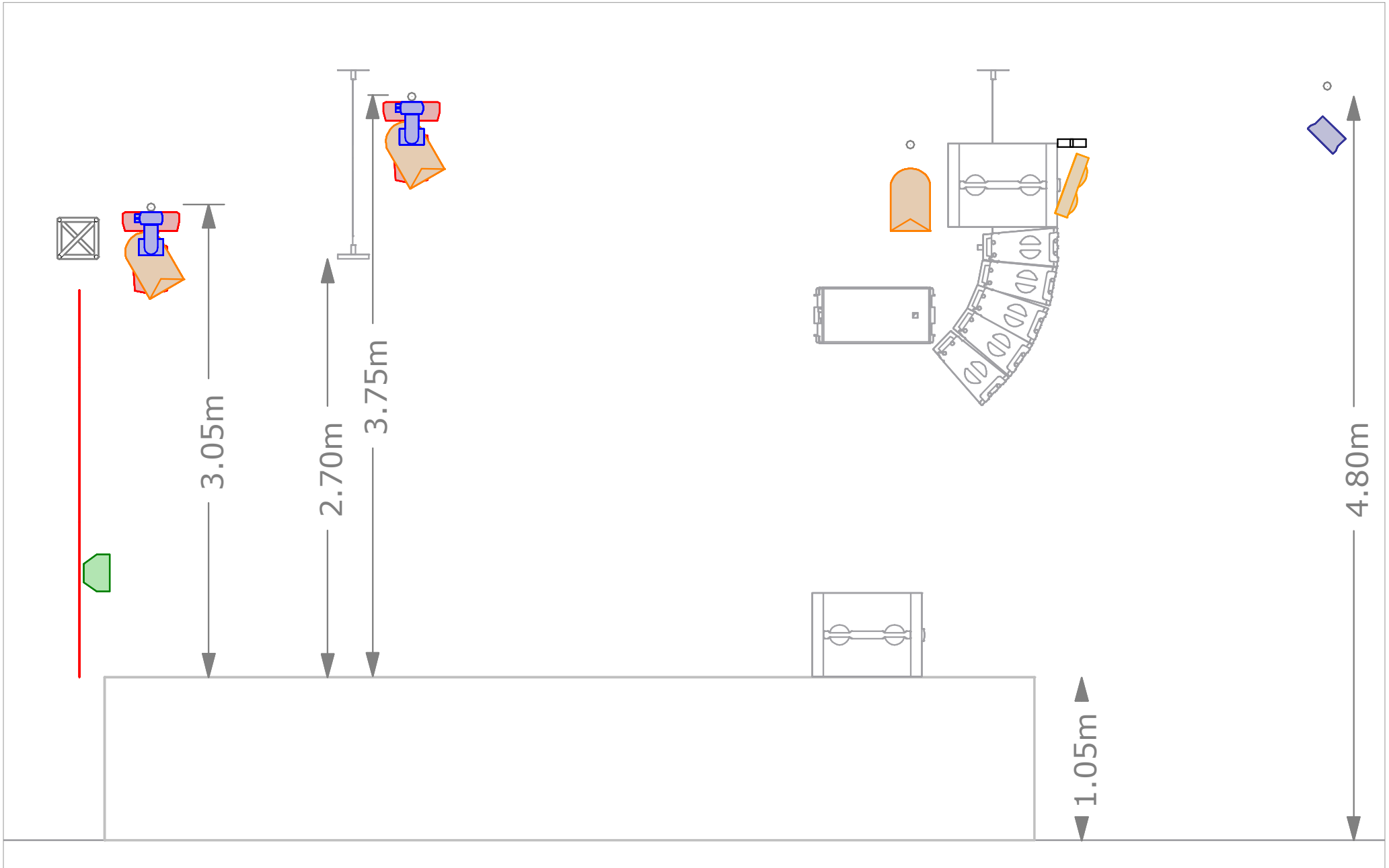
#### EFFECTS

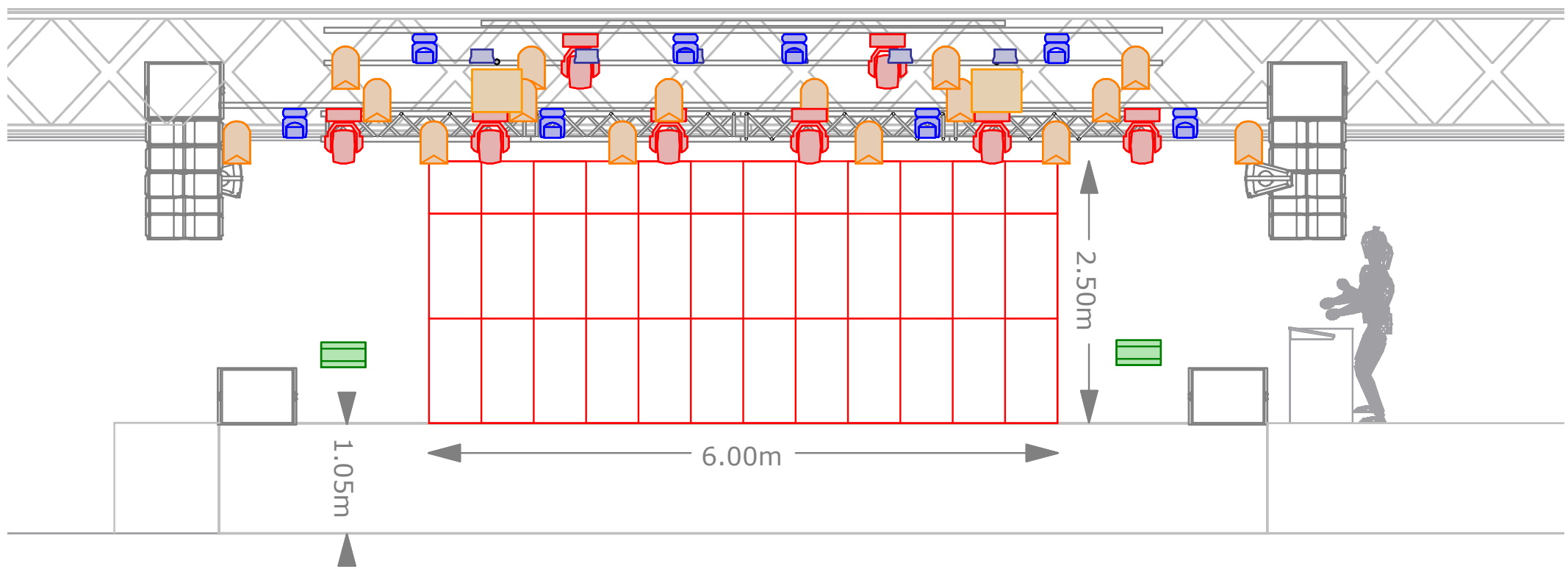
**Pyro:** Any Kind of Pyro FX are **PROHIBITED**.

**Confetti:** Streamers and metallic PVC confetti are **PROHIBITED**.

It is not permitted to hang or move fixtures on flown structures.  
Extra lighting must be placed exclusively on floor.

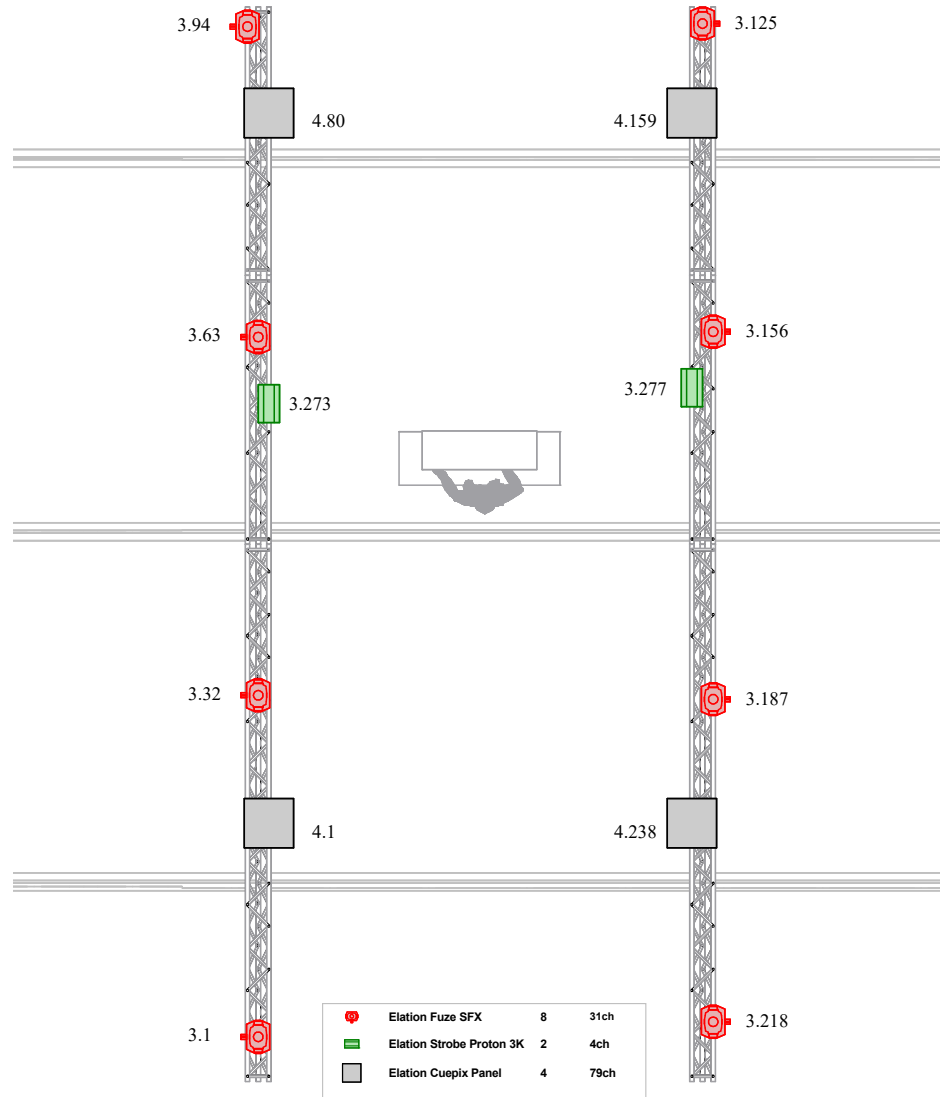






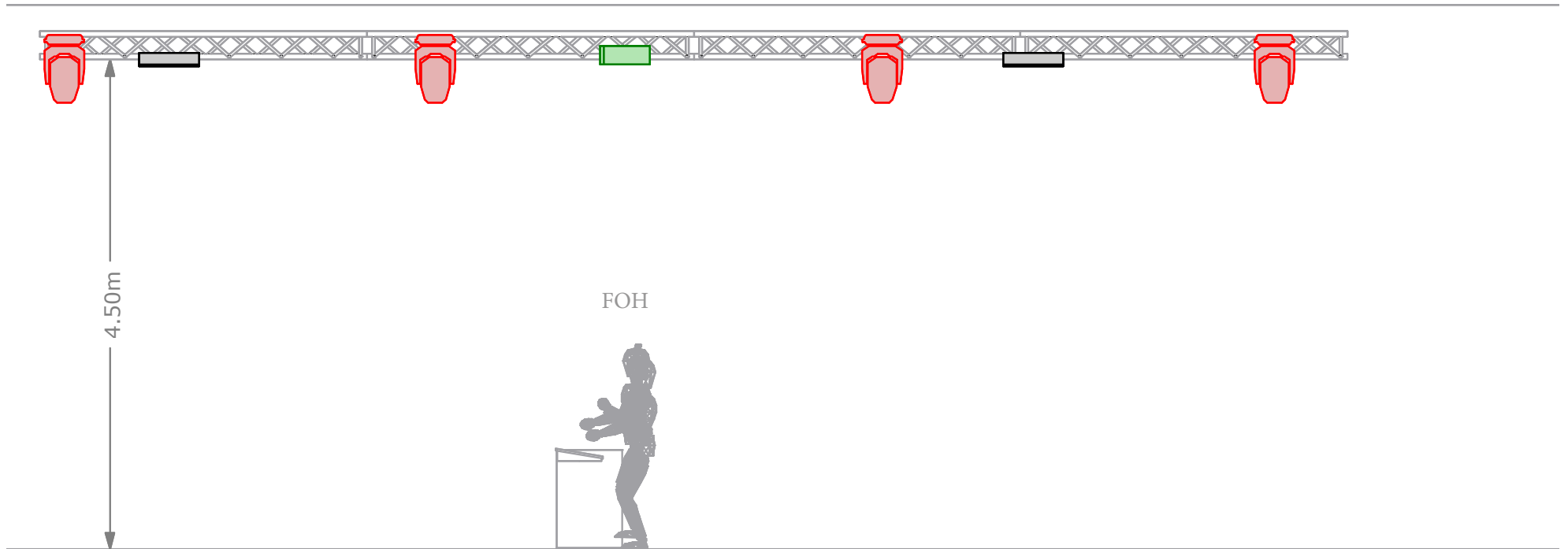
**DANCEFLOOR**

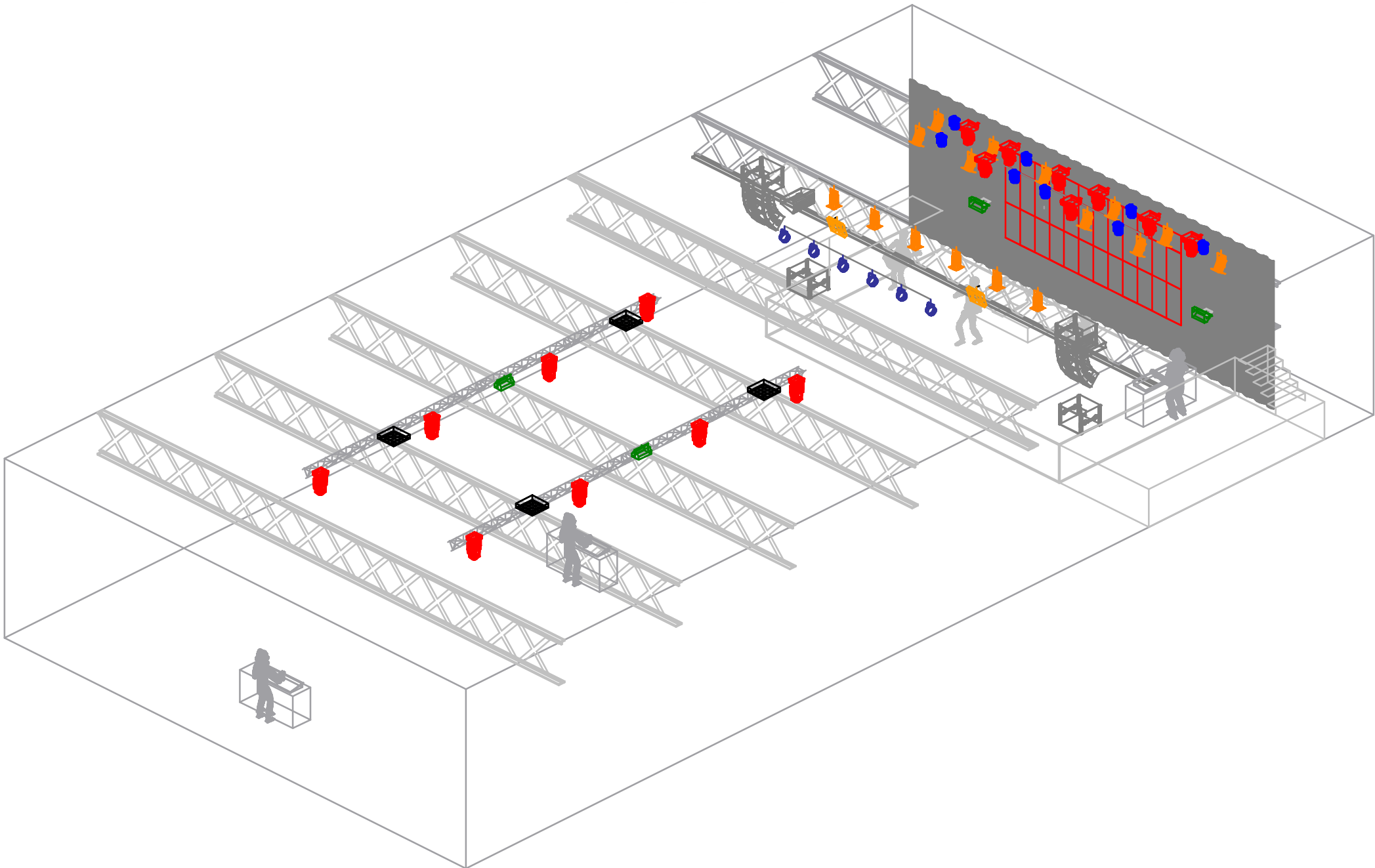
Fixtures not included in the Official Lighting Rider.  
 We cannot guarantee that the rig will be exactly  
 the same as shown in this plot.  
 It depends on the Club's activity.



**DANCEFLOOR**

Fixtures not included in the Official Lighting Rider.  
 We cannot guarantee that the rig will be exactly  
 the same as shown in this plot.  
 It depends on the Club's activity.





# RAZZMATAZZ

grandMA2 software version: 3.90.60.4

## PATCH SALA2 / CONCERTS

15 Apr 2024

### LINE 1

#### STAGE

Clay Paky, Axcor Spot 300	x 08	23ch	101,124, 147, 170, 193, 216, 239, 262	
Robe, LedBeam 150	x 08	mode 1	285,307, 329, 351, 373, 395, 417, 439	
Elation, Par Led Sixpar 200 / Front	x 06	8ch	405,413, 421, 429, 437, 445	
Elation, Par Led Sixpar 200 / Side	x 02	8ch	453,461	
Elation, Strobe Protron 3K	x 02	4ch	70,74	
Par64 Zenithal	x 06	dimm	1-6	
Par64 Back	x 10	dimm	7-16	
Martin Rush Blinder 1 WW	x 02	8ch mode	78,86	
MDG ATme	x 01	<b>3ch</b>	510	<b>ch1 + ch3 always ON / ch 2 haze regulation</b>

### LINE 2

#### Extra Stage

### LINE 3

#### DANCEFLOOR

Elation Fuze SFX	x 08	31ch	1,32, 63, 94, 125, 156, 187, 218	
Elation, Strobe Protron 3K	x 02	4ch	273, 277	

### LINE 4

#### DANCEFLOOR Cuepix

Elation, Cuepix Panel	x 04	79ch	1,80, 159, 238	
-----------------------	------	------	----------------	--