

# RAZZMATAZZ

## **RAZZMATAZZ / STAGE 1 VIDEO EQUIPMENT v2**

### **LED SCREEN**

8000 x 4500 mm

3.9mm pixel pitch

Real resolution: 2048 x 1152 pixels

Aspect Ratio 1.788:1

Brightness 4000 nits

Truss Motor: 2 x 1.6Ton S52 SV MB

Infiled AR Lite

Model IL-RSS-ORAR3.91 Turbo

The screen can only be raised from 60 to 2000mm from the ground.

Cannot move in the depth of the stage

### **VIDEO PROCESSOR**

Novastar H5

### **ENERGY CONTROL**

Viscon Ecoprotect EPPM 32

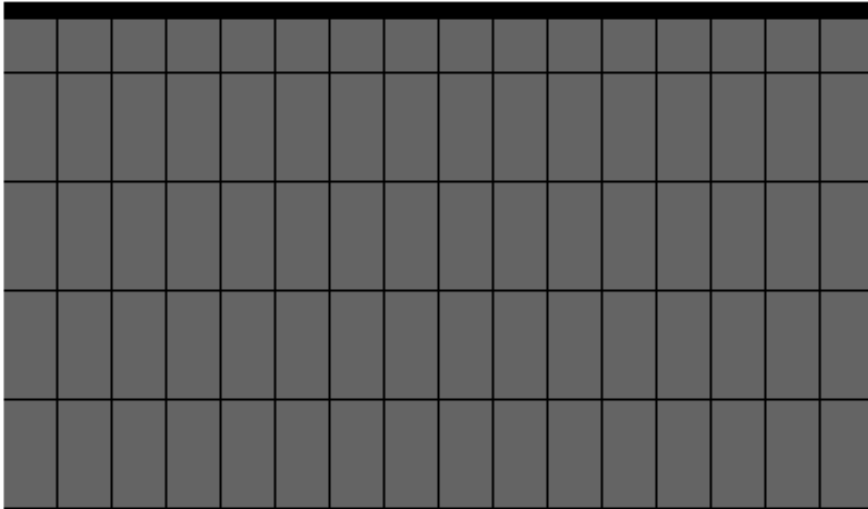
### **VIDEO MIXER**

Roland VR50-HD MKII

### **STAFF**

1 x Video technician

## INFILED AR3.91 PLUS LE: 16x4.5 Configuration



Amount	Description
64	INFILED AR3.9 plus Indoor/Outdoor LED Cabinet 500x1000mm
16	INFILED AR3.9 plus Indoor/Outdoor LED Half-Cabinet 500x500mm
2	INFILED Truss W2 for 2 modules ER/AR-series
4	INFILED Truss W3 for 3 modules ER/AR-series



2048 x 1152  
Resolution (px)



8000 x 4500  
Screen Dimensions (mm)



36  
Display Area (m<sup>2</sup>)



8.64(avg.), 25.92(max.)  
Power Consumption (kW)



1310  
Weight (kg)



4635  
Height (mm)



8000  
Width (mm)



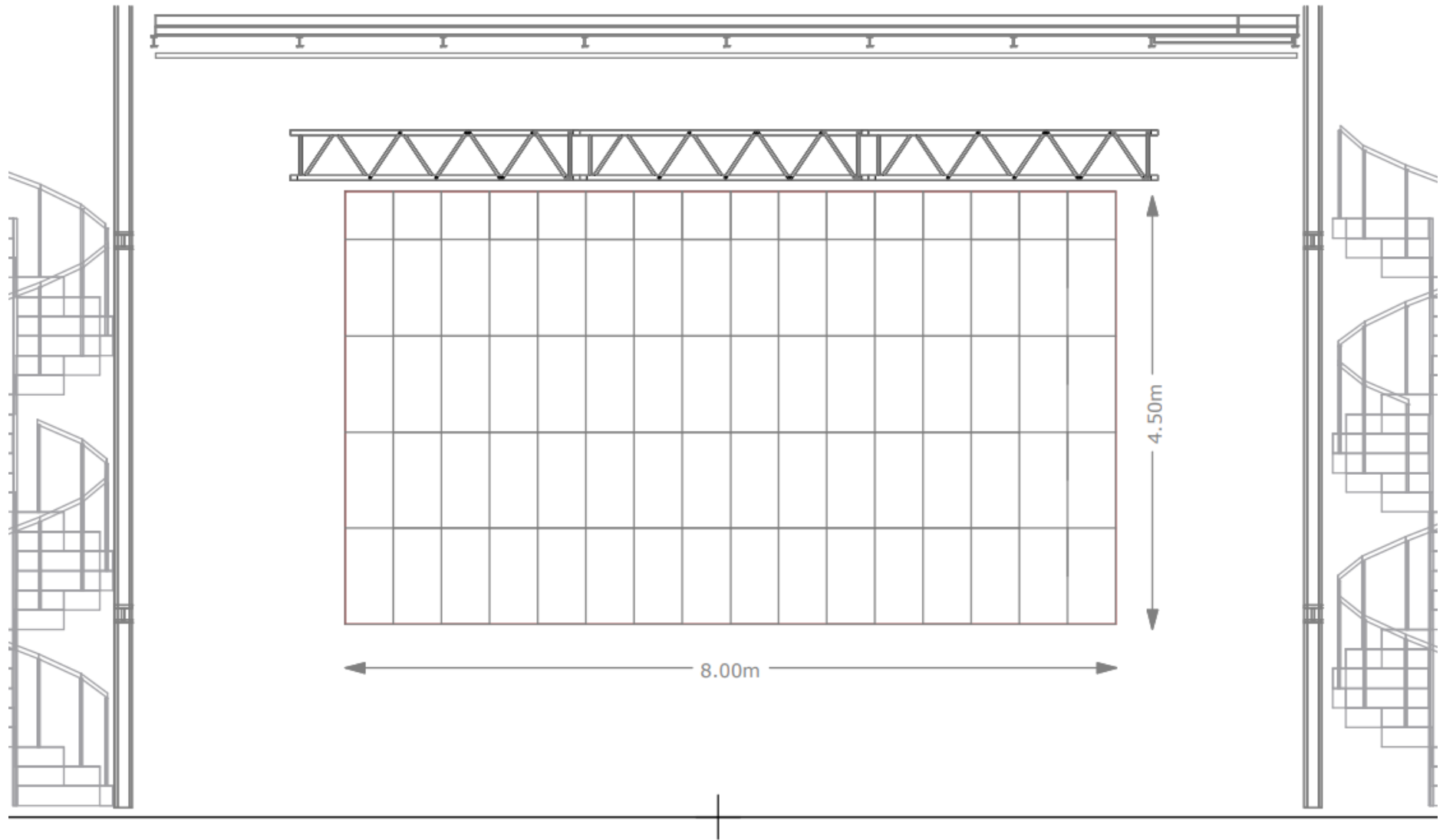
107  
Depth (mm)  
Minimum depth for back service +600 mm

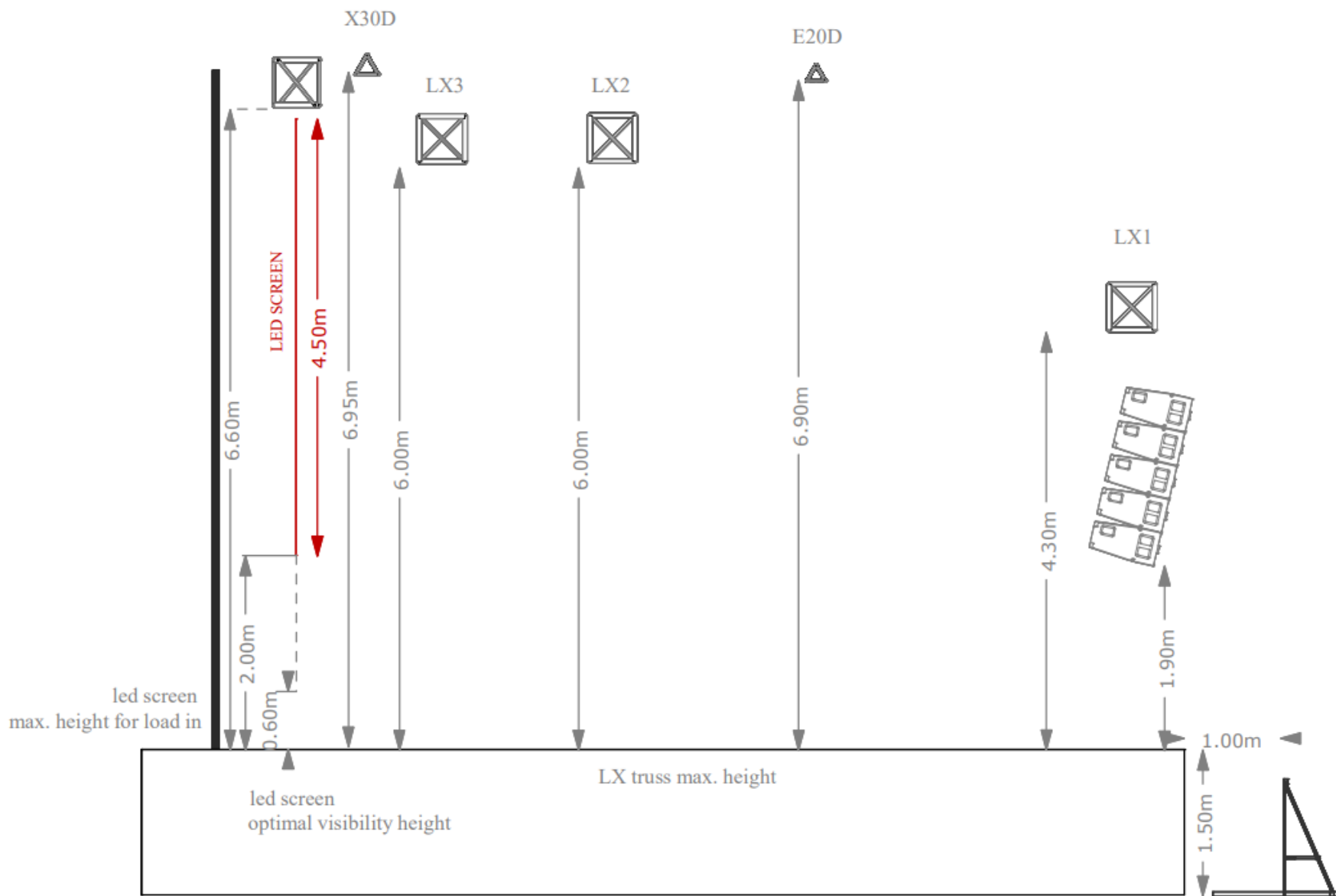


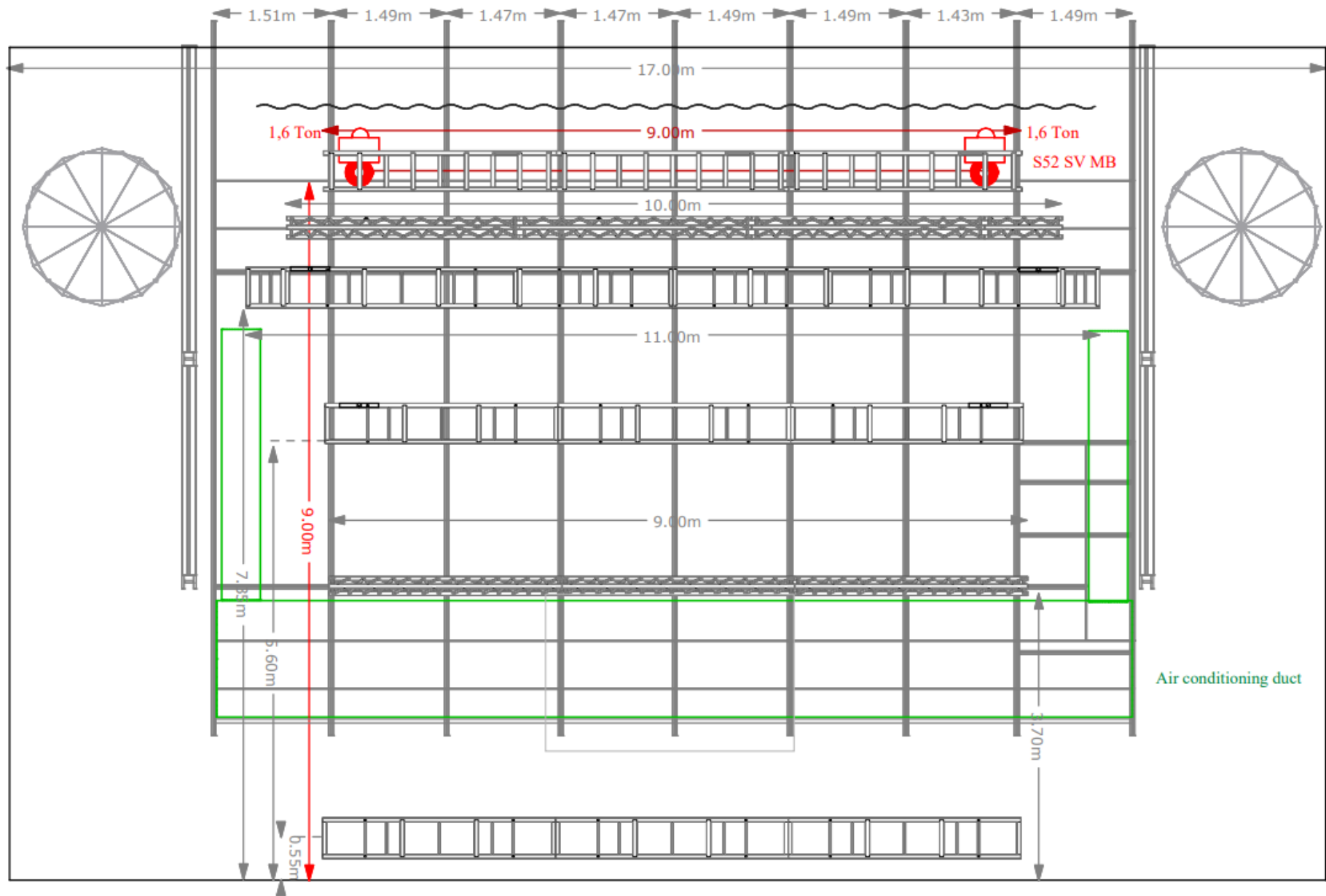
6  
Suspension Points



1.778:1  
Aspect Ratio







## Panel Specification

General Information	Model Number	IL-RSS-ORAR3.91 Turbo
	Pixel Pitch	3.91mm
	Environments	Outdoor
Physical Parameter	Physical Density	65,536pixels/m <sup>2</sup>
	LED Arrangement	3 IN 1 SMD
	LED Wavelength	R: 615-630nm / G: 515-535nm / B: 465-480nm
	LED Package Manufacturer	SMD1818 black LED
	Module Resolution	64(H)x128(V)pixels
	Module Dimensions	250x500mm
	Module Quantity	4 pcs
	Module Weight	1.37kg
	Cabinet Resolution	128(H)x256(V)pixels
	Cabinet Dimensions (mm/inch)	500x1000x67mm/19.69x39.37x2.64in
	Cabinet Weight	12.5kg
	Maintenance	Front / Rear
	Cabinet Material	Die-casting magnesium
	Max Rigging	18 panels
Optical Parameter	Brightness (After Calibration)	4000nits
	Brightness Adjustment	0~100% 256 levels
	Viewing Angle	160°/155°
	Contrast Ratio	12000:1
	Color Temperature – (Default, Adjustable)	6500K(3000K~10000K adjustable)
	Display Color	≥4.4T
	Greyscale	≥14bit
Power Supply	Max. Power Consumption	360 W/Panel
	Avg. Power Consumption	120 W/Panel
	Operating Power Source	100-240V AC 50-60Hz
Control System	Frequency	50-60Hz
	Refresh Rate	3,840Hz
	Control Mode	Synchronous display
	Signal Input Source	DVI, HDMI, DP, SDI
	Receiving Card	A8s-N
	Multiplex/Driver Chips	1:8, ICND2055
	Control Distance	Ethernet cable≤120m or Fiber Optic≤15km
Operation Conditions	Operating Temperature	-20℃~+45℃
	Operating Humidity	10-90%RH Non-condensing
	IP Rating (Front/Rear)	IP65
	LED Lifetime	≥50000h
	Certification	CE, ETL, FCC, RoHS, REACH, WEEE, Fireproof